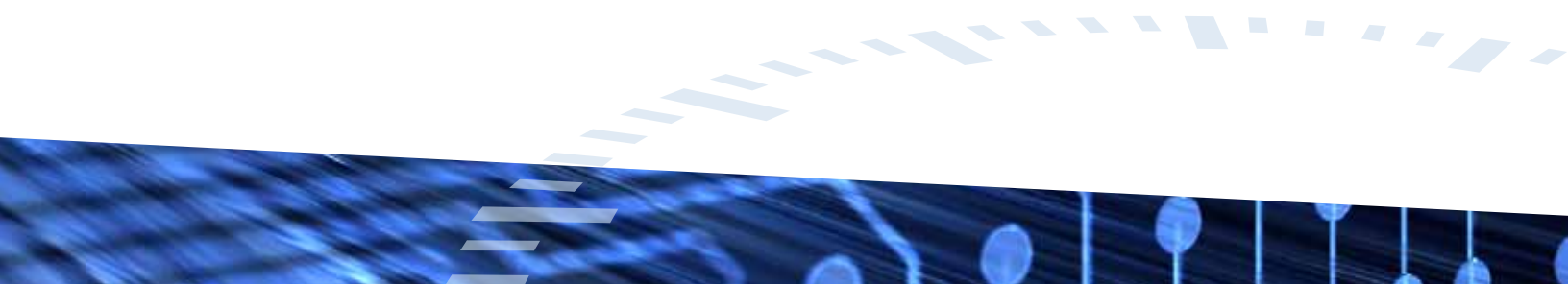


adiPad • adiTouch



BIOMETRIC DATA COLLECTION



ADI TIME TERMINALS

ADI Time provides a complete product line of IP based real-time “Push” terminals designed for adiTime Software solutions. The offerings include an innovative touch screen series (adiTouch) and a keypad series (adiPad). ADI Time terminals working in tandem with ADI Time’s powerful software, helps organizations of any size completely automate their time and attendance processes.

IP based real-time “push clock”

All employee information is instantly recognized in adiTime Software.

Lumidigm™ reliability

This exceptionally reliable fingerprint sensor virtually eliminates the common performance problems experienced when using conventional fingerprint sensors such as failure to enroll, high false read rates and poor performance in outdoor environments.

Eliminates buddy punching

Ensure proper data collection by eliminating opportunities of employee time theft.

Easy-to-use graphical user interface

The intuitive GUI was developed with smartphone ease-of-use in mind, and is combined with the brilliant color display to provide a world-class user experience.

Seamless integration to adiTime Software

The only terminal designed by ADI Time, for ADI Time. Tight integration means the terminal is always up-to-date with software revisions and employee data.

Zero configuration and easy to install

No user interaction is necessary for initial configuration. Simply connect power and data to the terminal and start punching.

Reliable and affordable

Low entry price provides a platform for small companies to realize efficiencies and power of biometric terminals when coupled with ADI Time’s industry leading time and attendance software. adiPad and adiTouch terminals are rugged and durable to withstand years of hard use from office settings to factory floors.

TECHNOLOGY

Our world class platform and intuitive user experience are designed to provide fast, accurate, and reliable data collection for any labor environment. Ideal for time and attendance, workforce management, employee self-service, shop floor data collection, and access control, ADI Time is the intelligent and affordable decision for any organization.



BIOMETRIC AUTHENTICATION

The ADI Time terminals utilize Lumidigm multispectral technology which provides superior finger images by evaluating the subsurface fingerprint to increase biometric performance and create a more secure and reliable result.

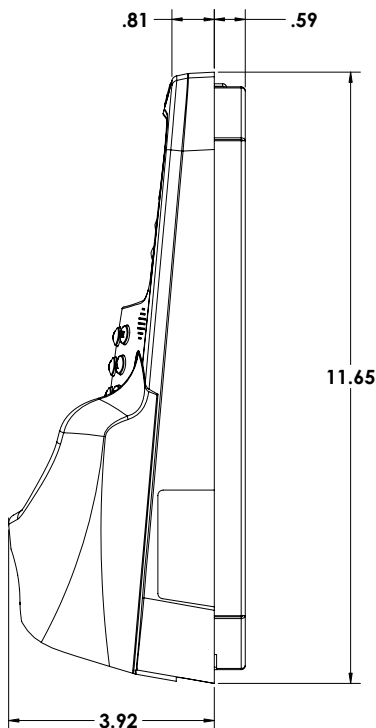
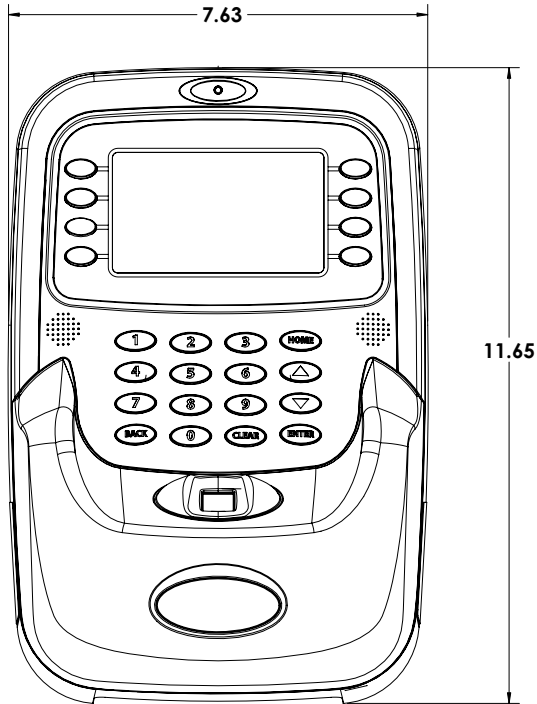
The Lumidigm technology uses multiple spectrums of light and advanced polarization techniques to extract unique fingerprint characteristics from both the surface and subsurface of the skin. The nature of human skin physiology is such that this subsurface information is both relevant to fingerprint capture and unaffected by surface wear and other environmental factors. This technology allows ADI Time to store templates of the employee's finger image instead of finger prints, alleviating security concerns.

Reliable biometric authentication reduces the ability for employee buddy punching and improves the accuracy of data input. The American Payroll Association (APA) estimates losses from buddy punching can equate to 2-5% of total payroll. Biometric solutions for problematic buddy punching are very economical when evaluated against the cost of buddy punching.



biometric models

ADI-P400L	Keypad data input	4.3" (diagonal) color display 480 X 272 pixel resolution
ADI-P700L	Touchscreen data input	7" (diagonal) color display 480 x 800 pixel resolution



specifications

weight 3.5 lbs (no mounting plate); 5.5 lbs (with mounting plate)

dimensions 7.63"W x 11.65"H x 3.92"D

power 24W @12VDC
Installation with universal power supply:
100 - 240 VAC: 47 - 63 Hz

environment Operating: 32°F to 113°F (0°C to 45°C); 20% to 80% RH
Storage: 14°F to 140°F (-10°C to 60°C); 5% to 85% RH

communications Ethernet and USB

platform 166Mhz processor, 512MB flash memory with
optional expansion

capacity 4,000 template capacity with expansion capability

biometric Verification (1 to 1 matching)
authentication Validation (1 to many matching)

access control SPDT relay for door lock output
Relay terminals rated for 120V: 5A

optional battery Two hour battery backup utilizing 8 AAA NiMH batteries
backup

certifications ETL, FCC Class A

